

BLUETOOTH PROFILE CONFORMANCE TEST REPORT

Project Number: SRTC2022-9004(S)-22031404(C)
Product Name: BLE5 SOC
Product Model: PAN1080
Applicant: Shanghai Panchip Microelectronics Co., Ltd
Manufacturer: Shanghai Panchip Microelectronics Co., Ltd
Specification: Bluetooth Profile Test Suite Structure and Test Purposes

The State Radio_monitoring_center Testing Center (SRTC)
15th Building, No.30, Shixing Street, Shijingshan District,
Beijing, P.R.China

Tel: 86-10-57996123 Fax: 86-10-57996388

Table of Contents

1 GENERAL INFORMATION	3
1.1 Notes of the test report	3
1.2 Information about the testing laboratory	3
1.3 Applicant's details	3
1.4 Manufacturer's details	3
1.5 Test Environment	4
2 DESCRIPTION OF THE EUT	5
3 REFERENCE SPECIFICATION	6
4 KEY TO NOTES AND RESULT CODES	7
5 RESULTS SUMMARY	8
6 TEST RESULTS	9
6.1 GAP (Version GAP.TS.p41)	9
6.2 GATT (Version GATT.TS.p21)	14
6.3 L2CAP (Version L2CAP.TS.p33)	20
6.4 SM (Version SM.TS.p21)	22
6.5 DIS (Version MESH.TS.1.1.3)	25
6.6 MESH (Version MESH.TS.p9)	25
7 TEST EQUIPMENTS	37
Annex A-Protocol Implementation Conformance Statement (PICS)	38
Annex A1: DIS_PICS Reference To TestReport_DIS_2022_04_20_09_12_05.xml	38
Annex A2: MESH_PICS Reference To TestReport_MESH_2022_04_15_16_08_45.xml	38
Annex A3: L2CAP_PICS Reference To TestReport_L2CAP_2022_04_17_17_20_39.xml ..	38
Annex A4: GATT_PICS Reference To TestReport_GATT_2022_04_14_04_40_57.xml	38
Annex A5: GAP_PICS Reference To TestReport_GAP_2022_04_14_04_35_04.xml	38
Annex A6: SM_PICS Reference To TestReport_SM_2022_04_18_10_56_37.xml	38
Annex B- Protocol Implementation Extra Information For Testing (PIXIT)	39
Annex B1: DIS_PIXIT Reference To Report_DIS_2022_04_20_09_12_05.xml	39
Annex B2: MESH_PIXIT Reference To Report_MESH_2022_04_15_16_08_45.xml	39

Annex B3: L2CAP_PIXIT Refence To Report_L2CAP_2022_04_17_17_20_39.xml	39
Annex B4: GATT_PIXIT Refence To Report_GATT_2022_04_14_04_40_57.xml	39
Annex B5: GAP_PIXIT Refence To Report_GAP_2022_04_14_04_35_04.xml	39
Annex B6: SM_PIXIT Refence To Report_SM_2022_04_18_10_56_37.xml	39
 Annex C-EUT Photograph	 40

1 GENERAL INFORMATION

1.1 Notes of the test report

The test report may only be reproduced or published in full. Reproduction or publication of extracts from the report requires the prior written permission of The State Radio_monitoring_center Testing Center (SRTC).

The test results relate only to individual items of the samples which have been tested.

1.2 Information about the testing laboratory

Company:	The State Radio_monitoring_center Testing Center (SRTC)
Address:	15th Building, No.30 Shixing Street, Shijingshan District
City:	Beijing
Country or Region:	P.R.China
Contacted person:	Peng Zhen
Tel:	86-10-57996123
Fax:	86-10-57996388
Website:	www.srtc.org.cn

1.3 Applicant's details

Company:	Shanghai Panchip Microelectronics Co., Ltd
Address:	666 shengxia road,suite D-302 Zhangjiang Hi-TechPark,Shanghai
City:	Shanghai
Country or Region:	P.R.China
Contacted person:	Zemin Li
Tel:	13918166184
Email:	lizemin@panchip.com

1.4 Manufacturer's details

Company:	Shanghai Panchip Microelectronics Co., Ltd
Address:	666 shengxia road,suite D-302 Zhangjiang Hi-TechPark,Shanghai
City:	Shanghai
Country or Region:	P.R.China
Contacted person:	Zemin Li
Tel:	13918166184
Email:	lizemin@panchip.com

1.5 Test Environment

Date of Receipt of test sample at SRTC:	2022.03.14
Testing Start Date:	2022.03.14
Testing End Date:	2022.05.19
PIXIT:	See annex B
Conformance log reference:	Refer to LOG documents
Retention date for log reference:	5 years

2 DESCRIPTION OF THE EUT

Product Name:	BLE5 SOC
Product Model:	PAN1080
Software Revision:	1.0
Hardware Revision:	1.0
Bluetooth Address:	AB:89:67:45:23:01 (Public)
PICS:	See Annex A
Description of EUT:	PAN1080 integrates BLE5 and 2.4GHz dual-mode wireless SoC transceiver. PAN1080 is suitable for wireless mouse and keyboard, smart home and electronic shelf label, BLE-AOA indoor locating.
Sampling Method:	Sample Delivered

3 REFERENCE SPECIFICATION

Specification	Version	Title
GAP	GAP.TS.p41	Generic Access Profile
GATT	GATT.TS.p21	Generic Attribute Profile
L2CAP	L2CAP.TS.p33	Logical Link Control and Adaption Protocol
SM	SM.TS.p21	Security Manager Protocol
DIS	DIS.TS.1.1.3	Device Information Service
MESH	MESH.TS.p9	Mesh Profile

4 KEY TO NOTES AND RESULT CODES

Code	Meaning
PASS	Test result shows that the requirements of the relevant specification have been met.
FAIL	Test result shows that the requirements of the relevant specification have not been met.
N/A	Test case is not applicable.
Observations:	Provides a reference to additional information relevant to the test presented in section 7.

5 RESULTS SUMMARY

The following table summarises the test results obtained.

PASS	683
FAIL	0
N/A	0
Total	683

<p>This Test Report Is Issued by:</p> <p>Mr. Peng Zhen 彭振</p>	<p>Checked by:</p> <p>Mr. Sun Yang 孙阳</p>
<p>Tested by:</p> <p>Ms. Ren Xinyu 任馨宇</p>	<p>Issued date:</p> <p>2022.05.19</p>

6 TEST RESULTS

6.1 GAP (Version GAP.TS.p41)

No.	Test Case Id	Verdict	Observations
1.	GAP/ADV/BV-01-C	PASS	TestSetup1
2.	GAP/ADV/BV-02-C	PASS	TestSetup1
3.	GAP/ADV/BV-03-C	PASS	TestSetup1
4.	GAP/ADV/BV-04-C	PASS	TestSetup1
5.	GAP/ADV/BV-05-C	PASS	TestSetup1
6.	GAP/ADV/BV-08-C	PASS	TestSetup1
7.	GAP/ADV/BV-09-C	PASS	TestSetup1
8.	GAP/ADV/BV-10-C	PASS	TestSetup1
9.	GAP/ADV/BV-11-C	PASS	TestSetup1
10.	GAP/ADV/BV-12-C	PASS	TestSetup1
11.	GAP/ADV/BV-13-C	PASS	TestSetup1
12.	GAP/ADV/BV-14-C	PASS	TestSetup1
13.	GAP/ADV/BV-17-C	PASS	TestSetup1
14.	GAP/BOND/BON/BV-01-C	PASS	TestSetup1
15.	GAP/BOND/BON/BV-02-C	PASS	TestSetup1
16.	GAP/BOND/BON/BV-03-C	PASS	TestSetup1
17.	GAP/BOND/BON/BV-04-C	PASS	TestSetup1
18.	GAP/BOND/NBON/BV-01-C	PASS	TestSetup1
19.	GAP/BOND/NBON/BV-02-C	PASS	TestSetup1
20.	GAP/BOND/NBON/BV-03-C	PASS	TestSetup1
21.	GAP/BROB/BCST/BV-01-C	PASS	TestSetup1
22.	GAP/BROB/BCST/BV-02-C	PASS	TestSetup1
23.	GAP/BROB/BCST/BV-03-C	PASS	TestSetup1
24.	GAP/BROB/BCST/BV-04-C	PASS	TestSetup1

No.	Test Case Id	Verdict	Observations
25.	GAP/BROB/OBSV/BV-01-C	PASS	TestSetup1
26.	GAP/BROB/OBSV/BV-02-C	PASS	TestSetup1
27.	GAP/BROB/OBSV/BV-05-C	PASS	TestSetup1
28.	GAP/CONN/ACEP/BV-01-C	PASS	TestSetup1
29.	GAP/CONN/CPUP/BV-01-C	PASS	TestSetup1
30.	GAP/CONN/CPUP/BV-02-C	PASS	TestSetup1
31.	GAP/CONN/CPUP/BV-03-C	PASS	TestSetup1
32.	GAP/CONN/CPUP/BV-04-C	PASS	TestSetup1
33.	GAP/CONN/CPUP/BV-05-C	PASS	TestSetup1
34.	GAP/CONN/CPUP/BV-06-C	PASS	TestSetup1
35.	GAP/CONN/CPUP/BV-08-C	PASS	TestSetup1
36.	GAP/CONN/DCEP/BV-01-C	PASS	TestSetup1
37.	GAP/CONN/DCEP/BV-03-C	PASS	TestSetup1
38.	GAP/CONN/UCON/BV-06-C	PASS	TestSetup1
39.	GAP/CONN/GCEP/BV-01-C	PASS	TestSetup1
40.	GAP/CONN/GCEP/BV-02-C	PASS	TestSetup1
41.	GAP/CONN/NCON/BV-01-C	PASS	TestSetup1
42.	GAP/CONN/NCON/BV-02-C	PASS	TestSetup1
43.	GAP/CONN/NCON/BV-03-C	PASS	TestSetup1
44.	GAP/CONN/PRDA/BV-01-C	PASS	TestSetup1
45.	GAP/CONN/PRDA/BV-02-C	PASS	TestSetup1
46.	GAP/CONN/TERM/BV-01-C	PASS	TestSetup1
47.	GAP/CONN/UCON/BV-01-C	PASS	TestSetup1
48.	GAP/DISC/NONM/BV-02-C	PASS	TestSetup1
49.	GAP/CONN/UCON/BV-02-C	PASS	TestSetup1
50.	GAP/CONN/UCON/BV-03-C	PASS	TestSetup1
51.	GAP/DISC/GENM/BV-03-C	PASS	TestSetup1

No.	Test Case Id	Verdict	Observations
52.	GAP/DISC/GENM/BV-04-C	PASS	TestSetup1
53.	GAP/DISC/GENP/BV-01-C	PASS	TestSetup1
54.	GAP/DISC/GENP/BV-02-C	PASS	TestSetup1
55.	GAP/DISC/GENP/BV-03-C	PASS	TestSetup1
56.	GAP/DISC/GENP/BV-04-C	PASS	TestSetup1
57.	GAP/DISC/GENP/BV-05-C	PASS	TestSetup1
58.	GAP/DISC/LIMM/BV-03-C	PASS	TestSetup1
59.	GAP/DISC/LIMM/BV-04-C	PASS	TestSetup1
60.	GAP/DISC/LIMP/BV-01-C	PASS	TestSetup1
61.	GAP/DISC/LIMP/BV-02-C	PASS	TestSetup1
62.	GAP/DISC/LIMP/BV-03-C	PASS	TestSetup1
63.	GAP/DISC/LIMP/BV-04-C	PASS	TestSetup1
64.	GAP/DISC/LIMP/BV-05-C	PASS	TestSetup1
65.	GAP/DISC/NONM/BV-01-C	PASS	TestSetup1
66.	GAP/GAT/BV-04-C	PASS	TestSetup1
67.	GAP/GAT/BV-05-C	PASS	TestSetup1
68.	GAP/IDLE/NAMP/BV-01-C	PASS	TestSetup1
69.	GAP/IDLE/NAMP/BV-02-C	PASS	TestSetup1
70.	GAP/PRIV/CONN/BV-10-C	PASS	TestSetup1
71.	GAP/PRIV/CONN/BV-12-C	PASS	TestSetup1
72.	GAP/PRIV/CONN/BV-11-C	PASS	TestSetup1
73.	GAP/SEC/AUT/BV-11-C	PASS	TestSetup1
74.	GAP/SEC/AUT/BV-26-C	PASS	TestSetup1
75.	GAP/SEC/AUT/BV-12-C	PASS	TestSetup1
76.	GAP/SEC/AUT/BV-25-C	PASS	TestSetup1
77.	GAP/SEC/AUT/BV-13-C	PASS	TestSetup1
78.	GAP/SEC/AUT/BV-14-C	PASS	TestSetup1

No.	Test Case Id	Verdict	Observations
79.	GAP/SEC/AUT/BV-17-C	PASS	TestSetup1
80.	GAP/SEC/AUT/BV-18-C	PASS	TestSetup1
81.	GAP/SEC/AUT/BV-19-C	PASS	TestSetup1
82.	GAP/SEC/AUT/BV-20-C	PASS	TestSetup1
83.	GAP/SEC/AUT/BV-21-C	PASS	TestSetup1
84.	GAP/SEC/AUT/BV-22-C	PASS	TestSetup1
85.	GAP/SEC/AUT/BV-23-C	PASS	TestSetup1
86.	GAP/SEC/AUT/BV-28-C	PASS	TestSetup1
87.	GAP/SEC/AUT/BV-24-C	PASS	TestSetup1
88.	GAP/SEC/AUT/BV-27-C	PASS	TestSetup1
89.	GAP/SEC/CSIGN/BI-01-C	PASS	TestSetup1
90.	GAP/SEC/CSIGN/BI-02-C	PASS	TestSetup1
91.	GAP/SEC/CSIGN/BI-03-C	PASS	TestSetup1
92.	GAP/SEC/CSIGN/BI-04-C	PASS	TestSetup1
93.	GAP/SEC/CSIGN/BV-02-C	PASS	TestSetup1
94.	GAP/SEC/CSIGN/BV-01-C	PASS	TestSetup1
95.	GAP/SEC/SEM/BV-21-C	PASS	TestSetup1
96.	GAP/SEC/SEM/BV-22-C	PASS	TestSetup1
97.	GAP/SEC/SEM/BI-09-C	PASS	TestSetup1
98.	GAP/SEC/SEM/BV-45-C	PASS	TestSetup1
99.	GAP/SEC/SEM/BV-23-C	PASS	TestSetup1
100.	GAP/SEC/SEM/BV-24-C	PASS	TestSetup1
101.	GAP/SEC/SEM/BV-26-C	PASS	TestSetup1
102.	GAP/SEC/SEM/BV-27-C	PASS	TestSetup1
103.	GAP/SEC/SEM/BV-28-C	PASS	TestSetup1
104.	GAP/SEC/SEM/BV-29-C	PASS	TestSetup1
105.	GAP/SEC/SEM/BI-10-C	PASS	TestSetup1

No.	Test Case Id	Verdict	Observations
106.	GAP/ADV/BV-18-C	PASS	TestSetup1
107.	GAP/CONN/CPUP/BV-10-C	PASS	TestSetup1
108.	GAP/SEC/SEM/BV-56-C	PASS	TestSetup1
109.	GAP/SEC/SEM/BV-57-C	PASS	TestSetup1
110.	GAP/SEC/SEM/BV-58-C	PASS	TestSetup1
111.	GAP/SEC/SEM/BV-59-C	PASS	TestSetup1
112.	GAP/SEC/SEM/BV-60-C	PASS	TestSetup1
113.	GAP/SEC/SEM/BV-61-C	PASS	TestSetup1
114.	GAP/SEC/SEM/BV-62-C	PASS	TestSetup1
115.	GAP/SEC/SEM/BV-63-C	PASS	TestSetup1
116.	GAP/SEC/SEM/BV-64-C	PASS	TestSetup1
117.	GAP/SEC/SEM/BV-65-C	PASS	TestSetup1
118.	GAP/SEC/SEM/BV-66-C	PASS	TestSetup1
119.	GAP/SEC/SEM/BV-67-C	PASS	TestSetup1

6.2 GATT (Version GATT.TS.p21)

No.	Test Case Id	Verdict	Observations
1.	GATT/SR/GAR/BV-01-C	PASS	TestSetup1
2.	GATT/SR/GAR/BI-45-C	PASS	TestSetup1
3.	GATT/SR/GAR/BI-01-C	PASS	TestSetup1
4.	GATT/SR/GAR/BI-02-C	PASS	TestSetup1
5.	GATT/SR/GAR/BV-03-C	PASS	TestSetup1
6.	GATT/SR/GAR/BI-06-C	PASS	TestSetup1
7.	GATT/SR/GAR/BI-07-C	PASS	TestSetup1
8.	GATT/SR/GAR/BI-08-C	PASS	TestSetup1
9.	GATT/CL/GAD/BV-03-C	PASS	TestSetup1
10.	GATT/SR/GAR/BV-04-C	PASS	TestSetup1
11.	GATT/SR/GAR/BI-12-C	PASS	TestSetup1
12.	GATT/SR/GAR/BI-13-C	PASS	TestSetup1
13.	GATT/SR/GAR/BI-14-C	PASS	TestSetup1
14.	GATT/SR/GAR/BV-05-C	PASS	TestSetup1
15.	GATT/SR/GAR/BI-18-C	PASS	TestSetup1
16.	GATT/SR/GAR/BI-19-C	PASS	TestSetup1
17.	GATT/SR/GAR/BV-06-C	PASS	TestSetup1
18.	GATT/SR/GAR/BV-07-C	PASS	TestSetup1
19.	GATT/SR/GAR/BV-08-C	PASS	TestSetup1
20.	GATT/CL/GAS/BV-01-C	PASS	TestSetup1
21.	GATT/SR/GAS/BV-01-C	PASS	TestSetup1
22.	GATT/CL/GAT/BV-01-C	PASS	TestSetup1
23.	GATT/CL/GAR/BI-01-C	PASS	TestSetup1
24.	GATT/CL/GAR/BI-02-C	PASS	TestSetup1
25.	GATT/CL/GAR/BV-01-C	PASS	TestSetup1
26.	GATT/CL/GAT/BV-02-C	PASS	TestSetup1

No.	Test Case Id	Verdict	Observations
27.	GATT/CL/GAW/BI-02-C	PASS	TestSetup1
28.	GATT/CL/GAW/BI-03-C	PASS	TestSetup1
29.	GATT/CL/GAW/BI-33-C	PASS	TestSetup1
30.	GATT/CL/GAW/BV-03-C	PASS	TestSetup1
31.	GATT/SR/GAT/BV-01-C	PASS	TestSetup1
32.	GATT/SR/GAI/BV-01-C	PASS	TestSetup1
33.	GATT/CL/GAW/BI-04-C	PASS	TestSetup1
34.	GATT/CL/GAW/BI-05-C	PASS	TestSetup1
35.	GATT/CL/GAW/BI-06-C	PASS	TestSetup1
36.	GATT/CL/GAW/BI-07-C	PASS	TestSetup1
37.	GATT/CL/GAW/BI-08-C	PASS	TestSetup1
38.	GATT/CL/GAW/BI-09-C	PASS	TestSetup1
39.	GATT/CL/GAW/BV-05-C	PASS	TestSetup1
40.	GATT/CL/GAW/BI-11-C	PASS	TestSetup1
41.	GATT/CL/GAD/BV-04-C	PASS	TestSetup1
42.	GATT/CL/GAW/BI-12-C	PASS	TestSetup1
43.	GATT/CL/GAW/BI-13-C	PASS	TestSetup1
44.	GATT/CL/GAW/BI-32-C	PASS	TestSetup1
45.	GATT/CL/GAW/BV-06-C	PASS	TestSetup1
46.	GATT/CL/GAD/BV-05-C	PASS	TestSetup1
47.	GATT/CL/GAW/BI-34-C	PASS	TestSetup1
48.	GATT/CL/GAW/BV-01-C	PASS	TestSetup1
49.	GATT/CL/GAW/BV-02-C	PASS	TestSetup1
50.	GATT/CL/GAW/BV-08-C	PASS	TestSetup1
51.	GATT/CL/GAW/BV-09-C	PASS	TestSetup1
52.	GATT/SR/GAW/BI-01-C	PASS	TestSetup1
53.	GATT/SR/GAW/BV-02-C	PASS	TestSetup1

No.	Test Case Id	Verdict	Observations
54.	GATT/SR/GAW/BI-02-C	PASS	TestSetup1
55.	GATT/SR/GAW/BI-03-C	PASS	TestSetup1
56.	GATT/SR/GAW/BI-32-C	PASS	TestSetup1
57.	GATT/SR/GAW/BV-03-C	PASS	TestSetup1
58.	GATT/SR/GAW/BI-04-C	PASS	TestSetup1
59.	GATT/SR/GAW/BI-05-C	PASS	TestSetup1
60.	GATT/SR/GAW/BI-06-C	PASS	TestSetup1
61.	GATT/SR/GAW/BI-07-C	PASS	TestSetup1
62.	GATT/SR/GAW/BI-08-C	PASS	TestSetup1
63.	GATT/SR/GAW/BI-09-C	PASS	TestSetup1
64.	GATT/SR/GAW/BV-05-C	PASS	TestSetup1
65.	GATT/CL/GAD/BV-06-C	PASS	TestSetup1
66.	GATT/SR/GAW/BI-11-C	PASS	TestSetup1
67.	GATT/SR/GAW/BI-12-C	PASS	TestSetup1
68.	GATT/SR/GAW/BI-13-C	PASS	TestSetup1
69.	GATT/SR/GAW/BI-33-C	PASS	TestSetup1
70.	GATT/SR/GAW/BV-01-C	PASS	TestSetup1
71.	GATT/SR/GAW/BV-06-C	PASS	TestSetup1
72.	GATT/SR/GAW/BV-07-C	PASS	TestSetup1
73.	GATT/SR/GAW/BV-10-C	PASS	TestSetup1
74.	GATT/SR/GAW/BV-08-C	PASS	TestSetup1
75.	GATT/SR/GAW/BV-11-C	PASS	TestSetup1
76.	GATT/SR/GAW/BV-09-C	PASS	TestSetup1
77.	GATT/SR/GAD/BV-01-C	PASS	TestSetup1
78.	GATT/SR/GAD/BV-02-C	PASS	TestSetup1
79.	GATT/CL/GAS/BV-02-C	PASS	TestSetup1
80.	GATT/CL/GAS/BV-03-C	PASS	TestSetup1

No.	Test Case Id	Verdict	Observations
81.	GATT/SR/GAS/BV-02-C	PASS	TestSetup1
82.	GATT/SR/GAD/BV-03-C	PASS	TestSetup1
83.	GATT/SR/GAS/BV-03-C	PASS	TestSetup1
84.	GATT/SR/GAS/BV-04-C	PASS	TestSetup1
85.	GATT/SR/GAS/BV-05-C	PASS	TestSetup1
86.	GATT/SR/GAS/BV-06-C	PASS	TestSetup1
87.	GATT/SR/GAS/BV-07-C	PASS	TestSetup1
88.	GATT/SR/GAD/BV-04-C	PASS	TestSetup1
89.	GATT/CL/GAS/BV-04-C	PASS	TestSetup1
90.	GATT/SR/GAC/BI-01-C	PASS	TestSetup1
91.	GATT/SR/GAD/BV-05-C	PASS	TestSetup1
92.	GATT/SR/GAD/BV-06-C	PASS	TestSetup1
93.	GATT/SR/GAW/BV-12-C	PASS	TestSetup1
94.	GATT/SR/GAW/BV-13-C	PASS	TestSetup1
95.	GATT/SR/GAW/BV-14-C	PASS	TestSetup1
96.	GATT/SR/GPM/BV-05-C	PASS	TestSetup1
97.	GATT/CL/GAI/BI-01-C	PASS	TestSetup1
98.	GATT/CL/GAI/BV-01-C	PASS	TestSetup1
99.	GATT/CL/GPM/BV-11-C	PASS	TestSetup1
100.	GATT/SR/GAW/BI-38-C	PASS	TestSetup1
101.	GATT/SR/UNS/BI-01-C	PASS	TestSetup1
102.	GATT/SR/UNS/BI-02-C	PASS	TestSetup1
103.	GATT/CL/GAN/BV-01-C	PASS	TestSetup1
104.	GATT/SR/GAN/BV-01-C	PASS	TestSetup1
105.	GATT/CL/GAR/BI-03-C	PASS	TestSetup1
106.	GATT/CL/GAR/BI-04-C	PASS	TestSetup1
107.	GATT/CL/GAR/BI-05-C	PASS	TestSetup1

No.	Test Case Id	Verdict	Observations
108.	GATT/CL/GAR/BI-06-C	PASS	TestSetup1
109.	GATT/CL/GAR/BI-07-C	PASS	TestSetup1
110.	GATT/CL/GAR/BV-03-C	PASS	TestSetup1
111.	GATT/CL/GAR/BI-09-C	PASS	TestSetup1
112.	GATT/CL/GAR/BI-10-C	PASS	TestSetup1
113.	GATT/CL/GAR/BI-11-C	PASS	TestSetup1
114.	GATT/CL/GAR/BI-12-C	PASS	TestSetup1
115.	GATT/CL/GAR/BI-13-C	PASS	TestSetup1
116.	GATT/CL/GAR/BI-14-C	PASS	TestSetup1
117.	GATT/CL/GAR/BV-04-C	PASS	TestSetup1
118.	GATT/CL/GAR/BI-15-C	PASS	TestSetup1
119.	GATT/CL/GAR/BI-16-C	PASS	TestSetup1
120.	GATT/CL/GAR/BI-17-C	PASS	TestSetup1
121.	GATT/CL/GAR/BI-18-C	PASS	TestSetup1
122.	GATT/CL/GAR/BI-19-C	PASS	TestSetup1
123.	GATT/CL/GAR/BV-05-C	PASS	TestSetup1
124.	GATT/CL/GAC/BV-01-C	PASS	TestSetup1
125.	GATT/CL/GAR/BI-20-C	PASS	TestSetup1
126.	GATT/CL/GAR/BI-21-C	PASS	TestSetup1
127.	GATT/CL/GAR/BI-22-C	PASS	TestSetup1
128.	GATT/SR/GAC/BV-01-C	PASS	TestSetup1
129.	GATT/CL/GAR/BI-35-C	PASS	TestSetup1
130.	GATT/CL/GAD/BV-01-C	PASS	TestSetup1
131.	GATT/CL/GAR/BV-06-C	PASS	TestSetup1
132.	GATT/CL/GAR/BV-07-C	PASS	TestSetup1
133.	GATT/SR/GAR/BI-03-C	PASS	TestSetup1
134.	GATT/SR/GAR/BI-04-C	PASS	TestSetup1

No.	Test Case Id	Verdict	Observations
135.	GATT/SR/GAR/BI-05-C	PASS	TestSetup1
136.	GATT/SR/GAR/BI-09-C	PASS	TestSetup1
137.	GATT/SR/GAR/BI-10-C	PASS	TestSetup1
138.	GATT/SR/GAR/BI-11-C	PASS	TestSetup1
139.	GATT/SR/GAR/BI-15-C	PASS	TestSetup1
140.	GATT/SR/GAR/BI-16-C	PASS	TestSetup1
141.	GATT/SR/GAR/BI-17-C	PASS	TestSetup1
142.	GATT/CL/GAD/BV-02-C	PASS	TestSetup1
143.	GATT/SR/GAR/BI-20-C	PASS	TestSetup1
144.	GATT/SR/GAR/BI-21-C	PASS	TestSetup1
145.	GATT/SR/GAR/BI-22-C	PASS	TestSetup1

6.3 L2CAP (Version L2CAP.TS.p33)

No.	Test Case Id	Verdict	Observations
1.	L2CAP/COS/CFC/BV-01-C	PASS	TestSetup1
2.	L2CAP/COS/CFC/BV-02-C	PASS	TestSetup1
3.	L2CAP/COS/CFC/BV-03-C	PASS	TestSetup1
4.	L2CAP/COS/CFC/BV-04-C	PASS	TestSetup1
5.	L2CAP/LE/CFC/BI-01-C	PASS	TestSetup1
6.	L2CAP/LE/CFC/BV-06-C	PASS	TestSetup1
7.	L2CAP/LE/CFC/BV-07-C	PASS	TestSetup1
8.	L2CAP/LE/CFC/BV-09-C	PASS	TestSetup1
9.	L2CAP/LE/CFC/BV-23-C	PASS	TestSetup1
10.	L2CAP/LE/CFC/BV-26-C	PASS	TestSetup1
11.	L2CAP/LE/CFC/BV-27-C	PASS	TestSetup1
12.	L2CAP/LE/CFC/BV-28-C	PASS	TestSetup1
13.	L2CAP/LE/CFC/BV-31-C	PASS	TestSetup1
14.	L2CAP/COS/CFC/BV-05-C	PASS	TestSetup1
15.	L2CAP/LE/CFC/BV-01-C	PASS	TestSetup1
16.	L2CAP/LE/CFC/BV-02-C	PASS	TestSetup1
17.	L2CAP/LE/CFC/BV-04-C	PASS	TestSetup1
18.	L2CAP/LE/CFC/BV-16-C	PASS	TestSetup1
19.	L2CAP/LE/CFC/BV-18-C	PASS	TestSetup1
20.	L2CAP/LE/CFC/BV-21-C	PASS	TestSetup1
21.	L2CAP/LE/CFC/BV-22-C	PASS	TestSetup1
22.	L2CAP/LE/CFC/BV-24-C	PASS	TestSetup1
23.	L2CAP/LE/CFC/BV-29-C	PASS	TestSetup1
24.	L2CAP/LE/CFC/BV-03-C	PASS	TestSetup1
25.	L2CAP/LE/CFC/BV-05-C	PASS	TestSetup1
26.	L2CAP/LE/REJ/BI-02-C	PASS	TestSetup1

No.	Test Case Id	Verdict	Observations
27.	L2CAP/LE/CFC/BI-02-C	PASS	TestSetup1
28.	L2CAP/LE/CFC/BV-25-C	PASS	TestSetup1
29.	L2CAP/LE/CFC/BV-30-C	PASS	TestSetup1
30.	L2CAP/LE/CFC/BV-08-C	PASS	TestSetup1
31.	L2CAP/LE/CFC/BV-10-C	PASS	TestSetup1
32.	L2CAP/LE/CFC/BV-11-C	PASS	TestSetup1
33.	L2CAP/LE/CFC/BV-12-C	PASS	TestSetup1
34.	L2CAP/LE/CFC/BV-13-C	PASS	TestSetup1
35.	L2CAP/LE/CFC/BV-14-C	PASS	TestSetup1
36.	L2CAP/LE/CFC/BV-15-C	PASS	TestSetup1
37.	L2CAP/LE/CFC/BV-19-C	PASS	TestSetup1
38.	L2CAP/LE/CFC/BV-20-C	PASS	TestSetup1
39.	L2CAP/LE/CPU/BI-01-C	PASS	TestSetup1
40.	L2CAP/LE/CPU/BV-02-C	PASS	TestSetup1
41.	L2CAP/LE/CPU/BI-02-C	PASS	TestSetup1
42.	L2CAP/LE/CPU/BV-01-C	PASS	TestSetup1
43.	L2CAP/LE/REJ/BI-01-C	PASS	TestSetup1
44.	L2CAP/LE/CID/BI-01-C	PASS	TestSetup1
45.	L2CAP/TIM/BV-03-C	PASS	TestSetup1

6.4 SM (Version SM.TS.p21)

No.	Test Case Id	Verdict	Observations
1.	SM/CEN/EKS/BI-01-C	PASS	TestSetup1
2.	SM/CEN/EKS/BV-01-C	PASS	TestSetup1
3.	SM/CEN/JW/BI-01-C	PASS	TestSetup1
4.	SM/CEN/JW/BI-04-C	PASS	TestSetup1
5.	SM/CEN/JW/BV-05-C	PASS	TestSetup1
6.	SM/CEN/KDU/BI-01-C	PASS	TestSetup1
7.	SM/CEN/KDU/BV-04-C	PASS	TestSetup1
8.	SM/CEN/KDU/BV-05-C	PASS	TestSetup1
9.	SM/CEN/KDU/BI-02-C	PASS	TestSetup1
10.	SM/CEN/KDU/BV-06-C	PASS	TestSetup1
11.	SM/CEN/KDU/BV-10-C	PASS	TestSetup1
12.	SM/CEN/KDU/BI-03-C	PASS	TestSetup1
13.	SM/CEN/KDU/BV-11-C	PASS	TestSetup1
14.	SM/CEN/OOB/BI-01-C	PASS	TestSetup1
15.	SM/CEN/OOB/BV-01-C	PASS	TestSetup1
16.	SM/CEN/OOB/BV-03-C	PASS	TestSetup1
17.	SM/CEN/OOB/BV-09-C	PASS	TestSetup1
18.	SM/CEN/PKE/BI-01-C	PASS	TestSetup1
19.	SM/CEN/PKE/BI-02-C	PASS	TestSetup1
20.	SM/CEN/PKE/BV-01-C	PASS	TestSetup1
21.	SM/CEN/PKE/BV-04-C	PASS	TestSetup1
22.	SM/CEN/PROT/BV-01-C	PASS	TestSetup1
23.	SM/CEN/SCJW/BI-01-C	PASS	TestSetup1
24.	SM/CEN/SCJW/BV-01-C	PASS	TestSetup1
25.	SM/CEN/SCJW/BV-04-C	PASS	TestSetup1
26.	SM/CEN/SCOB/BI-01-C	PASS	TestSetup1

No.	Test Case Id	Verdict	Observations
27.	SM/CEN/SCOB/BI-04-C	PASS	TestSetup1
28.	SM/CEN/SCOB/BV-01-C	PASS	TestSetup1
29.	SM/CEN/SCOB/BV-04-C	PASS	TestSetup1
30.	SM/CEN/SCPK/BI-01-C	PASS	TestSetup1
31.	SM/CEN/SCPK/BI-02-C	PASS	TestSetup1
32.	SM/CEN/SCPK/BV-01-C	PASS	TestSetup1
33.	SM/CEN/SCPK/BV-04-C	PASS	TestSetup1
34.	SM/CEN/SIGN/BI-01-C	PASS	TestSetup1
35.	SM/CEN/SIGN/BV-03-C	PASS	TestSetup1
36.	SM/CEN/SIGN/BV-01-C	PASS	TestSetup1
37.	SM/CEN/SIP/BV-02-C	PASS	TestSetup1
38.	SM/PER/EKS/BI-02-C	PASS	TestSetup1
39.	SM/PER/EKS/BV-02-C	PASS	TestSetup1
40.	SM/PER/JW/BI-02-C	PASS	TestSetup1
41.	SM/PER/JW/BI-03-C	PASS	TestSetup1
42.	SM/PER/JW/BV-02-C	PASS	TestSetup1
43.	SM/PER/KDU/BI-01-C	PASS	TestSetup1
44.	SM/PER/KDU/BV-01-C	PASS	TestSetup1
45.	SM/PER/KDU/BV-02-C	PASS	TestSetup1
46.	SM/PER/KDU/BI-02-C	PASS	TestSetup1
47.	SM/PER/KDU/BV-03-C	PASS	TestSetup1
48.	SM/PER/KDU/BV-07-C	PASS	TestSetup1
49.	SM/PER/KDU/BV-08-C	PASS	TestSetup1
50.	SM/PER/KDU/BV-09-C	PASS	TestSetup1
51.	SM/PER/OOB/BI-02-C	PASS	TestSetup1
52.	SM/PER/OOB/BV-02-C	PASS	TestSetup1
53.	SM/PER/OOB/BV-04-C	PASS	TestSetup1

No.	Test Case Id	Verdict	Observations
54.	SM/PER/OOB/BV-10-C	PASS	TestSetup1
55.	SM/PER/PKE/BI-03-C	PASS	TestSetup1
56.	SM/PER/PKE/BV-02-C	PASS	TestSetup1
57.	SM/PER/PKE/BV-05-C	PASS	TestSetup1
58.	SM/PER/PROT/BV-02-C	PASS	TestSetup1
59.	SM/PER/SCJW/BI-02-C	PASS	TestSetup1
60.	SM/PER/SCJW/BV-02-C	PASS	TestSetup1
61.	SM/PER/SCJW/BV-03-C	PASS	TestSetup1
62.	SM/PER/SCOB/BI-02-C	PASS	TestSetup1
63.	SM/PER/SCOB/BI-03-C	PASS	TestSetup1
64.	SM/PER/SCOB/BV-02-C	PASS	TestSetup1
65.	SM/PER/SCOB/BV-03-C	PASS	TestSetup1
66.	SM/PER/SCPK/BI-03-C	PASS	TestSetup1
67.	SM/PER/SCPK/BI-04-C	PASS	TestSetup1
68.	SM/PER/SCPK/BV-02-C	PASS	TestSetup1
69.	SM/PER/SCPK/BV-03-C	PASS	TestSetup1
70.	SM/PER/SIE/BV-01-C	PASS	TestSetup1
71.	SM/PER/SIP/BV-01-C	PASS	TestSetup1
72.	SM/PER/KDU/BI-03-C	PASS	TestSetup1

6.5 DIS (Version MESH.TS.1.1.3)

No.	Test Case Id	Verdict	Observations
1.	DIS/SR/CR/BV-01-C	PASS	TestSetup1
2.	DIS/SR/DEC/BV-01-C	PASS	TestSetup1
3.	DIS/SR/DEC/BV-02-C	PASS	TestSetup1
4.	DIS/SR/CR/BV-02-C	PASS	TestSetup1
5.	DIS/SR/DEC/BV-03-C	PASS	TestSetup1
6.	DIS/SR/CR/BV-03-C	PASS	TestSetup1
7.	DIS/SR/DEC/BV-04-C	PASS	TestSetup1
8.	DIS/SR/CR/BV-04-C	PASS	TestSetup1
9.	DIS/SR/DEC/BV-05-C	PASS	TestSetup1
10.	DIS/SR/CR/BV-05-C	PASS	TestSetup1
11.	DIS/SR/DEC/BV-06-C	PASS	TestSetup1
12.	DIS/SR/CR/BV-06-C	PASS	TestSetup1
13.	DIS/SR/DEC/BV-09-C	PASS	TestSetup1
14.	DIS/SR/CR/BV-09-C	PASS	TestSetup1
15.	DIS/SR/SD/BV-01-C	PASS	TestSetup1

6.6 MESH (Version MESH.TS.p9)

No.	Test Case Id	Verdict	Observations
1.	MESH/CFGCL/CFG/AKL/BV-01-C	PASS	TestSetup1
2.	MESH/CFGCL/CFG/HBP/BV-01-C	PASS	TestSetup1
3.	MESH/CFGCL/CFG/HBS/BV-01-C	PASS	TestSetup1
4.	MESH/CFGCL/CFG/LPNPT/BV-01-C	PASS	TestSetup1
5.	MESH/CFGCL/CFG/MAKL/BV-01-C	PASS	TestSetup1

No.	Test Case Id	Verdict	Observations
6.	MESH/CFGCL/CFG/MAKL/BV-02-C	PASS	TestSetup1
7.	MESH/CFGCL/CFG/MAKL/BV-03-C	PASS	TestSetup1
8.	MESH/CFGCL/CFG/MAKL/BV-04-C	PASS	TestSetup1
9.	MESH/CFGCL/CFG/MP/BV-01-C	PASS	TestSetup1
10.	MESH/CFGCL/CFG/NID/BV-01-C	PASS	TestSetup1
11.	MESH/CFGCL/CFG/NKL/BV-01-C	PASS	TestSetup1
12.	MESH/CFGCL/CFG/AKL/BV-02-C	PASS	TestSetup1
13.	MESH/CFGCL/CFG/NKL/BV-02-C	PASS	TestSetup1
14.	MESH/CFGCL/CFG/NKL/BV-03-C	PASS	TestSetup1
15.	MESH/CFGCL/CFG/NTX/BV-01-C	PASS	TestSetup1
16.	MESH/CFGCL/CFG/RST/BV-01-C	PASS	TestSetup1
17.	MESH/CFGCL/CFG/SL/BV-01-C	PASS	TestSetup1
18.	MESH/CFGCL/CFG/SL/BV-02-C	PASS	TestSetup1
19.	MESH/CFGCL/CFG/SNBP/BV-01-C	PASS	TestSetup1
20.	MESH/CFGCL/KR/BV-01-C	PASS	TestSetup1
21.	MESH/CFGCL/KR/BV-02-C	PASS	TestSetup1
22.	MESH/CFGCL/KR/BV-03-C	PASS	TestSetup1
23.	MESH/CFGCL/CFG/AKL/BV-03-C	PASS	TestSetup1
24.	MESH/CFGCL/KR/BV-04-C	PASS	TestSetup1
25.	MESH/CFGCL/CFG/AKL/BV-04-C	PASS	TestSetup1
26.	MESH/CFGCL/CFG/CFGF/BV-01-C	PASS	TestSetup1
27.	MESH/CFGCL/CFG/CFGR/BV-01-C	PASS	TestSetup1
28.	MESH/CFGCL/CFG/COMP/BV-01-C	PASS	TestSetup1
29.	MESH/CFGCL/CFG/DTTL/BV-01-C	PASS	TestSetup1
30.	MESH/CFGCL/CFG/GPXY/BV-01-C	PASS	TestSetup1
31.	MESH/NODE/CFG/NID/BV-01-C	PASS	TestSetup1
32.	MESH/NODE/CFG/NID/BV-02-C	PASS	TestSetup1

No.	Test Case Id	Verdict	Observations
33.	MESH/NODE/CFG/NID/BV-03-C	PASS	TestSetup1
34.	MESH/NODE/CFG/NID/BI-01-C	PASS	TestSetup1
35.	MESH/NODE/CFG/NID/BI-03-C	PASS	TestSetup1
36.	MESH/NODE/CFG/NKL/BI-01-C	PASS	TestSetup1
37.	MESH/NODE/CFG/NKL/BI-02-C	PASS	TestSetup1
38.	MESH/NODE/CFG/NKL/BI-03-C	PASS	TestSetup1
39.	MESH/NODE/CFG/NKL/BV-01-C	PASS	TestSetup1
40.	MESH/NODE/CFG/NKL/BV-02-C	PASS	TestSetup1
41.	MESH/NODE/CFG/NKL/BV-04-C	PASS	TestSetup1
42.	MESH/NODE/CFG/NTX/BV-01-C	PASS	TestSetup1
43.	MESH/NODE/CFG/RST/BV-01-C	PASS	TestSetup1
44.	MESH/NODE/CFG/SL/BI-01-C	PASS	TestSetup1
45.	MESH/NODE/CFG/SL/BI-02-C	PASS	TestSetup1
46.	MESH/NODE/CFG/SL/BI-03-C	PASS	TestSetup1
47.	MESH/NODE/CFG/SL/BI-04-C	PASS	TestSetup1
48.	MESH/NODE/CFG/SL/BI-05-C	PASS	TestSetup1
49.	MESH/NODE/CFG/SL/BI-06-C	PASS	TestSetup1
50.	MESH/NODE/CFG/SL/BI-07-C	PASS	TestSetup1
51.	MESH/NODE/CFG/SL/BI-08-C	PASS	TestSetup1
52.	MESH/NODE/CFG/SL/BI-09-C	PASS	TestSetup1
53.	MESH/NODE/CFG/SL/BI-10-C	PASS	TestSetup1
54.	MESH/NODE/CFG/SL/BV-01-C	PASS	TestSetup1
55.	MESH/NODE/CFG/SL/BV-02-C	PASS	TestSetup1
56.	MESH/NODE/CFG/SL/BV-03-C	PASS	TestSetup1
57.	MESH/NODE/CFG/SNBP/BI-01-C	PASS	TestSetup1
58.	MESH/NODE/CFG/SNBP/BV-01-C	PASS	TestSetup1
59.	MESH/NODE/CFG/MP/BV-03-C	PASS	TestSetup1

No.	Test Case Id	Verdict	Observations
60.	MESH/NODE/CFG/AKL/BI-01-C	PASS	TestSetup1
61.	MESH/NODE/CFG/AKL/BI-02-C	PASS	TestSetup1
62.	MESH/NODE/CFG/AKL/BI-03-C	PASS	TestSetup1
63.	MESH/NODE/CFG/AKL/BI-04-C	PASS	TestSetup1
64.	MESH/NODE/CFG/AKL/BV-01-C	PASS	TestSetup1
65.	MESH/NODE/CFG/AKL/BV-02-C	PASS	TestSetup1
66.	MESH/NODE/CFG/AKL/BV-03-C	PASS	TestSetup1
67.	MESH/NODE/CFG/CFGF/BI-01-C	PASS	TestSetup1
68.	MESH/NODE/CFG/CFGF/BV-01-C	PASS	TestSetup1
69.	MESH/NODE/CFG/CFGR/BI-01-C	PASS	TestSetup1
70.	MESH/NODE/CFG/CFGR/BV-01-C	PASS	TestSetup1
71.	MESH/NODE/CFG/COMP/BV-01-C	PASS	TestSetup1
72.	MESH/NODE/CFG/DTTL/BI-01-C	PASS	TestSetup1
73.	MESH/NODE/CFG/DTTL/BV-01-C	PASS	TestSetup1
74.	MESH/NODE/CFG/GPXY/BI-01-C	PASS	TestSetup1
75.	MESH/NODE/CFG/GPXY/BV-01-C	PASS	TestSetup1
76.	MESH/NODE/CFG/HBP/BI-02-C	PASS	TestSetup1
77.	MESH/NODE/CFG/HBP/BV-01-C	PASS	TestSetup1
78.	MESH/NODE/CFG/HBP/BV-02-C	PASS	TestSetup1
79.	MESH/NODE/CFG/HBP/BV-06-C	PASS	TestSetup1
80.	MESH/NODE/CFG/HBS/BI-01-C	PASS	TestSetup1
81.	MESH/NODE/CFG/HBS/BV-01-C	PASS	TestSetup1
82.	MESH/NODE/CFG/HBS/BV-02-C	PASS	TestSetup1
83.	MESH/NODE/CFG/HBS/BV-03-C	PASS	TestSetup1
84.	MESH/NODE/CFG/HBS/BV-04-C	PASS	TestSetup1
85.	MESH/NODE/CFG/MAKL/BI-01-C	PASS	TestSetup1
86.	MESH/NODE/CFG/MAKL/BI-02-C	PASS	TestSetup1

No.	Test Case Id	Verdict	Observations
87.	MESH/NODE/CFG/MAKL/BI-03-C	PASS	TestSetup1
88.	MESH/NODE/CFG/MAKL/BI-04-C	PASS	TestSetup1
89.	MESH/NODE/CFG/MAKL/BV-01-C	PASS	TestSetup1
90.	MESH/NODE/CFG/MAKL/BV-02-C	PASS	TestSetup1
91.	MESH/NODE/CFG/MP/BI-01-C	PASS	TestSetup1
92.	MESH/NODE/CFG/MP/BI-02-C	PASS	TestSetup1
93.	MESH/NODE/CFG/MP/BI-03-C	PASS	TestSetup1
94.	MESH/NODE/CFG/MP/BV-01-C	PASS	TestSetup1
95.	MESH/NODE/CFG/MP/BV-02-C	PASS	TestSetup1
96.	MESH/NODE/CFG/NKL/BV-03-C	PASS	TestSetup1
97.	MESH/NODE/FRND/FN/BI-01-C	PASS	TestSetup1
98.	MESH/NODE/FRND/FN/BI-02-C	PASS	TestSetup1
99.	MESH/NODE/FRND/FN/BI-03-C	PASS	TestSetup1
100.	MESH/NODE/FRND/FN/BV-01-C	PASS	TestSetup1
101.	MESH/NODE/FRND/FN/BV-02-C	PASS	TestSetup1
102.	MESH/NODE/FRND/FN/BV-03-C	PASS	TestSetup1
103.	MESH/NODE/FRND/FN/BV-04-C	PASS	TestSetup1
104.	MESH/NODE/FRND/FN/BV-05-C	PASS	TestSetup1
105.	MESH/NODE/FRND/FN/BV-06-C	PASS	TestSetup1
106.	MESH/NODE/FRND/FN/BV-07-C	PASS	TestSetup1
107.	MESH/NODE/FRND/FN/BV-08-C	PASS	TestSetup1
108.	MESH/NODE/FRND/FN/BV-09-C	PASS	TestSetup1
109.	MESH/NODE/FRND/FN/BV-10-C	PASS	TestSetup1
110.	MESH/NODE/FRND/FN/BV-11-C	PASS	TestSetup1
111.	MESH/NODE/FRND/FN/BV-12-C	PASS	TestSetup1
112.	MESH/NODE/FRND/FN/BV-13-C	PASS	TestSetup1
113.	MESH/NODE/FRND/FN/BV-14-C	PASS	TestSetup1

No.	Test Case Id	Verdict	Observations
114.	MESH/NODE/FRND/FN/BV-15-C	PASS	TestSetup1
115.	MESH/NODE/FRND/FN/BV-16-C	PASS	TestSetup1
116.	MESH/NODE/FRND/FN/BV-17-C	PASS	TestSetup1
117.	MESH/NODE/FRND/FN/BV-18-C	PASS	TestSetup1
118.	MESH/NODE/FRND/FN/BV-19-C	PASS	TestSetup1
119.	MESH/NODE/FRND/FN/BV-20-C	PASS	TestSetup1
120.	MESH/NODE/FRND/FN/BV-21-C	PASS	TestSetup1
121.	MESH/NODE/NET/BV-12-C	PASS	TestSetup1
122.	MESH/NODE/FRND/FN/BV-22-C	PASS	TestSetup1
123.	MESH/NODE/FRND/FN/BV-23-C	PASS	TestSetup1
124.	MESH/NODE/CFG/HBP/BV-04-C	PASS	TestSetup1
125.	MESH/NODE/CFG/HBS/BV-05-C	PASS	TestSetup1
126.	MESH/NODE/CFG/LPNPT/BI-01-C	PASS	TestSetup1
127.	MESH/NODE/FRND/LPN/BI-01-C	PASS	TestSetup1
128.	MESH/NODE/FRND/LPN/BI-02-C	PASS	TestSetup1
129.	MESH/NODE/FRND/LPN/BI-03-C	PASS	TestSetup1
130.	MESH/NODE/FRND/LPN/BV-01-C	PASS	TestSetup1
131.	MESH/NODE/FRND/LPN/BV-02-C	PASS	TestSetup1
132.	MESH/NODE/FRND/LPN/BV-03-C	PASS	TestSetup1
133.	MESH/NODE/FRND/LPN/BV-04-C	PASS	TestSetup1
134.	MESH/NODE/FRND/LPN/BV-05-C	PASS	TestSetup1
135.	MESH/NODE/FRND/LPN/BV-06-C	PASS	TestSetup1
136.	MESH/NODE/FRND/LPN/BV-07-C	PASS	TestSetup1
137.	MESH/NODE/FRND/LPN/BV-08-C	PASS	TestSetup1
138.	MESH/NODE/CFG/HBP/BV-05-C	PASS	TestSetup1
139.	MESH/NODE/IVU/BI-01-C	PASS	TestSetup1
140.	MESH/NODE/IVU/BI-02-C	PASS	TestSetup1

No.	Test Case Id	Verdict	Observations
141.	MESH/NODE/IVU/BI-04-C	PASS	TestSetup1
142.	MESH/NODE/IVU/BI-05-C	PASS	TestSetup1
143.	MESH/NODE/IVU/BI-06-C	PASS	TestSetup1
144.	MESH/NODE/IVU/BV-01-C	PASS	TestSetup1
145.	MESH/NODE/IVU/BV-02-C	PASS	TestSetup1
146.	MESH/NODE/IVU/BV-04-C	PASS	TestSetup1
147.	MESH/NODE/IVU/BV-05-C	PASS	TestSetup1
148.	MESH/NODE/IVU/BV-03-C	PASS	TestSetup1
149.	MESH/NODE/KR/BI-01-C	PASS	TestSetup1
150.	MESH/NODE/KR/BI-02-C	PASS	TestSetup1
151.	MESH/NODE/KR/BI-03-C	PASS	TestSetup1
152.	MESH/NODE/KR/BI-04-C	PASS	TestSetup1
153.	MESH/NODE/KR/BI-05-C	PASS	TestSetup1
154.	MESH/NODE/KR/BV-01-C	PASS	TestSetup1
155.	MESH/NODE/KR/BV-02-C	PASS	TestSetup1
156.	MESH/NODE/KR/BV-03-C	PASS	TestSetup1
157.	MESH/NODE/MPS/BI-01-C	PASS	TestSetup1
158.	MESH/NODE/MPS/BV-01-C	PASS	TestSetup1
159.	MESH/NODE/MPS/BV-02-C	PASS	TestSetup1
160.	MESH/NODE/MPS/BV-03-C	PASS	TestSetup1
161.	MESH/NODE/MPS/BV-04-C	PASS	TestSetup1
162.	MESH/NODE/MPS/BV-05-C	PASS	TestSetup1
163.	MESH/NODE/MPS/BV-06-C	PASS	TestSetup1
164.	MESH/NODE/MPS/BV-07-C	PASS	TestSetup1
165.	MESH/NODE/MPS/BV-08-C	PASS	TestSetup1
166.	MESH/NODE/MPS/BV-09-C	PASS	TestSetup1
167.	MESH/NODE/MPS/BV-10-C	PASS	TestSetup1

No.	Test Case Id	Verdict	Observations
168.	MESH/NODE/NET/BI-01-C	PASS	TestSetup1
169.	MESH/NODE/NET/BI-02-C	PASS	TestSetup1
170.	MESH/NODE/NET/BI-03-C	PASS	TestSetup1
171.	MESH/NODE/NET/BV-01-C	PASS	TestSetup1
172.	MESH/NODE/NET/BV-02-C	PASS	TestSetup1
173.	MESH/NODE/NET/BV-03-C	PASS	TestSetup1
174.	MESH/NODE/NET/BV-04-C	PASS	TestSetup1
175.	MESH/NODE/NET/BV-05-C	PASS	TestSetup1
176.	MESH/NODE/NET/BV-06-C	PASS	TestSetup1
177.	MESH/NODE/NET/BV-07-C	PASS	TestSetup1
178.	MESH/NODE/NET/BV-08-C	PASS	TestSetup1
179.	MESH/NODE/NET/BV-09-C	PASS	TestSetup1
180.	MESH/NODE/NET/BV-10-C	PASS	TestSetup1
181.	MESH/NODE/NET/BV-14-C	PASS	TestSetup1
182.	MESH/NODE/NET/BV-11-C	PASS	TestSetup1
183.	MESH/SR/MPXS/BV-01-C	PASS	TestSetup1
184.	MESH/SR/MPXS/BV-02-C	PASS	TestSetup1
185.	MESH/SR/MPXS/BV-03-C	PASS	TestSetup1
186.	MESH/SR/MPXS/BV-04-C	PASS	TestSetup1
187.	MESH/SR/MPXS/BV-05-C	PASS	TestSetup1
188.	MESH/SR/MPXS/BV-06-C	PASS	TestSetup1
189.	MESH/SR/MPXS/BV-07-C	PASS	TestSetup1
190.	MESH/SR/MPXS/BV-09-C	PASS	TestSetup1
191.	MESH/NODE/CFG/GPXY/BV-02-C	PASS	TestSetup1
192.	MESH/NODE/CFG/HBP/BV-07-C	PASS	TestSetup1
193.	MESH/NODE/NET/BV-13-C	PASS	TestSetup1
194.	MESH/NODE/RLY/BI-01-C	PASS	TestSetup1

No.	Test Case Id	Verdict	Observations
195.	MESH/NODE/RLY/BI-02-C	PASS	TestSetup1
196.	MESH/NODE/RLY/BV-01-C	PASS	TestSetup1
197.	MESH/NODE/RLY/BV-02-C	PASS	TestSetup1
198.	MESH/NODE/CFG/HBP/BI-01-C	PASS	TestSetup1
199.	MESH/NODE/CFG/HBP/BV-03-C	PASS	TestSetup1
200.	MESH/NODE/PBADV/BI-01-C	PASS	TestSetup1
201.	MESH/NODE/PBADV/BI-02-C	PASS	TestSetup1
202.	MESH/NODE/PBADV/BI-03-C	PASS	TestSetup1
203.	MESH/NODE/PBADV/BI-04-C	PASS	TestSetup1
204.	MESH/NODE/PBADV/BV-01-C	PASS	TestSetup1
205.	MESH/NODE/PBADV/BV-02-C	PASS	TestSetup1
206.	MESH/NODE/PBADV/BV-03-C	PASS	TestSetup1
207.	MESH/NODE/PBADV/BV-04-C	PASS	TestSetup1
208.	MESH/NODE/PROV/BI-01-C	PASS	TestSetup1
209.	MESH/NODE/PROV/BI-02-C	PASS	TestSetup1
210.	MESH/NODE/PROV/BV-09-C	PASS	TestSetup1
211.	MESH/NODE/PROV/BV-10-C	PASS	TestSetup1
212.	MESH/NODE/PROV/BV-11-C	PASS	TestSetup1
213.	MESH/NODE/PROV/BV-12-C	PASS	TestSetup1
214.	MESH/NODE/PROV/BI-13-C	PASS	TestSetup1
215.	MESH/NODE/PROV/BI-03-C	PASS	TestSetup1
216.	MESH/NODE/PROV/BI-17-C	PASS	TestSetup1
217.	MESH/NODE/TNPT/BI-01-C	PASS	TestSetup1
218.	MESH/NODE/TNPT/BI-02-C	PASS	TestSetup1
219.	MESH/NODE/TNPT/BV-01-C	PASS	TestSetup1
220.	MESH/NODE/TNPT/BV-02-C	PASS	TestSetup1
221.	MESH/NODE/TNPT/BV-03-C	PASS	TestSetup1

No.	Test Case Id	Verdict	Observations
222.	MESH/NODE/TNPT/BV-04-C	PASS	TestSetup1
223.	MESH/NODE/TNPT/BV-05-C	PASS	TestSetup1
224.	MESH/NODE/TNPT/BV-06-C	PASS	TestSetup1
225.	MESH/NODE/TNPT/BV-07-C	PASS	TestSetup1
226.	MESH/NODE/TNPT/BV-08-C	PASS	TestSetup1
227.	MESH/NODE/TNPT/BV-09-C	PASS	TestSetup1
228.	MESH/NODE/TNPT/BV-10-C	PASS	TestSetup1
229.	MESH/NODE/TNPT/BV-11-C	PASS	TestSetup1
230.	MESH/NODE/TNPT/BV-12-C	PASS	TestSetup1
231.	MESH/NODE/TNPT/BV-13-C	PASS	TestSetup1
232.	MESH/PVNR/PBADV/BI-01-C	PASS	TestSetup1
233.	MESH/PVNR/PBADV/BV-01-C	PASS	TestSetup1
234.	MESH/PVNR/PBADV/BV-02-C	PASS	TestSetup1
235.	MESH/PVNR/PBADV/BV-03-C	PASS	TestSetup1
236.	MESH/SR/HM/ATS/BV-01-C	PASS	TestSetup1
237.	MESH/SR/HM/CFS/BV-01-C	PASS	TestSetup1
238.	MESH/SR/HM/CFS/BV-02-C	PASS	TestSetup1
239.	MESH/SR/HM/HPS/BV-01-C	PASS	TestSetup1
240.	MESH/SR/HM/RFS/BI-01-C	PASS	TestSetup1
241.	MESH/SR/HM/RFS/BI-02-C	PASS	TestSetup1
242.	MESH/SR/HM/RFS/BV-01-C	PASS	TestSetup1
243.	MESH/SR/HM/RFS/BV-02-C	PASS	TestSetup1
244.	MESH/SR/HM/RFS/BV-03-C	PASS	TestSetup1
245.	MESH/SR/PROX/BI-01-C	PASS	TestSetup1
246.	MESH/SR/PROX/BV-01-C	PASS	TestSetup1
247.	MESH/SR/PROX/BV-02-C	PASS	TestSetup1
248.	MESH/SR/PROX/BV-03-C	PASS	TestSetup1

No.	Test Case Id	Verdict	Observations
249.	MESH/SR/PROX/BV-04-C	PASS	TestSetup1
250.	MESH/SR/PROX/BV-05-C	PASS	TestSetup1
251.	MESH/SR/PROX/BV-06-C	PASS	TestSetup1
252.	MESH/SR/PROX/BV-07-C	PASS	TestSetup1
253.	MESH/SR/PROX/BV-08-C	PASS	TestSetup1
254.	MESH/SR/PROX/BV-09-C	PASS	TestSetup1
255.	MESH/SR/PROX/BV-10-C	PASS	TestSetup1
256.	MESH/SR/PROX/BV-11-C	PASS	TestSetup1
257.	MESH/SR/PROX/BV-12-C	PASS	TestSetup1
258.	MESH/SR/PROX/BV-13-C	PASS	TestSetup1
259.	MESH/SR/PROX/BV-14-C	PASS	TestSetup1
260.	MESH/SR/PROX/BI-02-C	PASS	TestSetup1
261.	MESH/NODE/PROV/BV-01-C	PASS	TestSetup1
262.	MESH/CL/HM/ATS/BV-01-C	PASS	TestSetup1
263.	MESH/CL/HM/HPS/BV-01-C	PASS	TestSetup1
264.	MESH/CL/HM/RFS/BV-01-C	PASS	TestSetup1
265.	MESH/NODE/PROV/BV-02-C	PASS	TestSetup1
266.	MESH/NODE/PROV/BV-03-C	PASS	TestSetup1
267.	MESH/NODE/PROV/BV-04-C	PASS	TestSetup1
268.	MESH/NODE/PROV/BV-05-C	PASS	TestSetup1
269.	MESH/NODE/PROV/BV-06-C	PASS	TestSetup1
270.	MESH/NODE/PROV/BV-07-C	PASS	TestSetup1
271.	MESH/NODE/PROV/BV-08-C	PASS	TestSetup1
272.	MESH/PVNR/PROV/BI-14-C	PASS	TestSetup1
273.	MESH/PVNR/PROV/BI-16-C	PASS	TestSetup1
274.	MESH/PVNR/PROV/BI-18-C	PASS	TestSetup1
275.	MESH/PVNR/PROV/BV-01-C	PASS	TestSetup1

No.	Test Case Id	Verdict	Observations
276.	MESH/PVNR/PROV/BV-02-C	PASS	TestSetup1
277.	MESH/PVNR/PROV/BV-03-C	PASS	TestSetup1
278.	MESH/PVNR/PROV/BV-04-C	PASS	TestSetup1
279.	MESH/PVNR/PROV/BV-05-C	PASS	TestSetup1
280.	MESH/PVNR/PROV/BV-06-C	PASS	TestSetup1
281.	MESH/PVNR/PROV/BV-07-C	PASS	TestSetup1
282.	MESH/PVNR/PROV/BV-08-C	PASS	TestSetup1
283.	MESH/PVNR/PROV/BV-09-C	PASS	TestSetup1
284.	MESH/PVNR/PROV/BV-10-C	PASS	TestSetup1
285.	MESH/NODE/PROV/BI-15-C	PASS	TestSetup1
286.	MESH/SR/PROX/BV-15-C	PASS	TestSetup1
287.	MESH/NODE/BCN/SNB/BV-01-C	PASS	TestSetup1

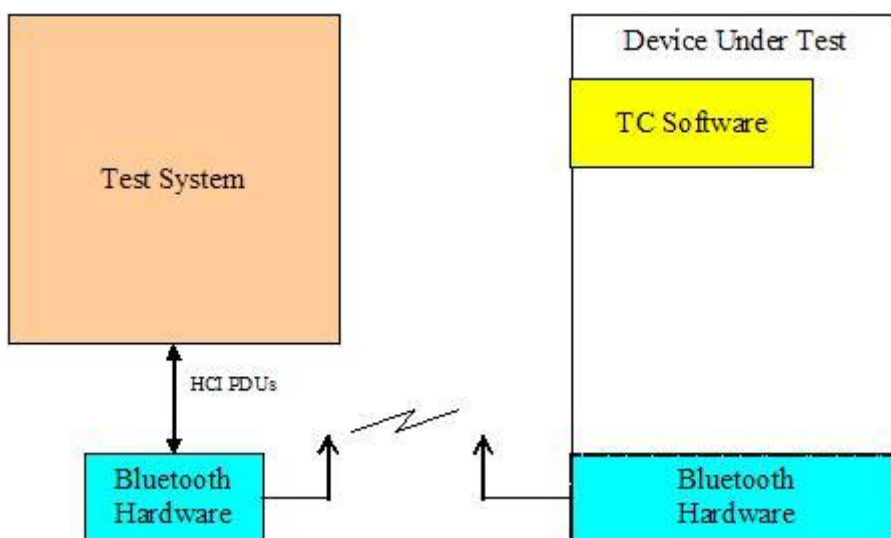
7 TEST EQUIPMENTS

Conformance testing was performed using test equipment calibrated in accordance with CNAS accreditation requirements. Calibration, configuration records and equipment details used for conformance testing are available for inspection at SRTC if required.

Software:	Bluetooth Profile Test SoftwarePTS– v8.0.0
Hardware	CSR NANOSTRA dongle
Auxiliary:	Lenovo T430u

Observations: The Test Setup used for the testing was the following:

TestSetup1:



The Test System PTS for Bluetooth is running on a PC System. The test system communicates with the Bluetooth Hardware via an HCI connection.

Annex A-Protocol Implementation Conformance Staement (PICS)

Annex A1: DIS_PICS Refence To TestReport_DIS_2022_04_20_09_12_05.xml

Annex A2: MESH_PICS Refence To TestReport_MESH_2022_04_15_16_08_45.xml

Annex A3: L2CAP_PICS Refence To TestReport_L2CAP_2022_04_17_17_20_39.xml

Annex A4: GATT_PICS Refence To TestReport_GATT_2022_04_14_04_40_57.xml

Annex A5: GAP_PICS Refence To TestReport_GAP_2022_04_14_04_35_04.xml

Annex A6: SM_PICS Refence To TestReport_SM_2022_04_18_10_56_37.xml

Annex B- Protocol Implementation Extra Information For Testing (PIXIT)

Annex B1: DIS_PIXIT Refence To Report_DIS_2022_04_20_09_12_05.xml

Annex B2: MESH_PIXIT Refence To Report_MESH_2022_04_15_16_08_45.xml

Annex B3: L2CAP_PIXIT Refence To Report_L2CAP_2022_04_17_17_20_39.xml

Annex B4: GATT_PIXIT Refence To Report_GATT_2022_04_14_04_40_57.xml

Annex B5: GAP_PIXIT Refence To Report_GAP_2022_04_14_04_35_04.xml

Annex B6: SM_PIXIT Refence To Report_SM_2022_04_18_10_56_37.xml

Annex C-EUT Photograph

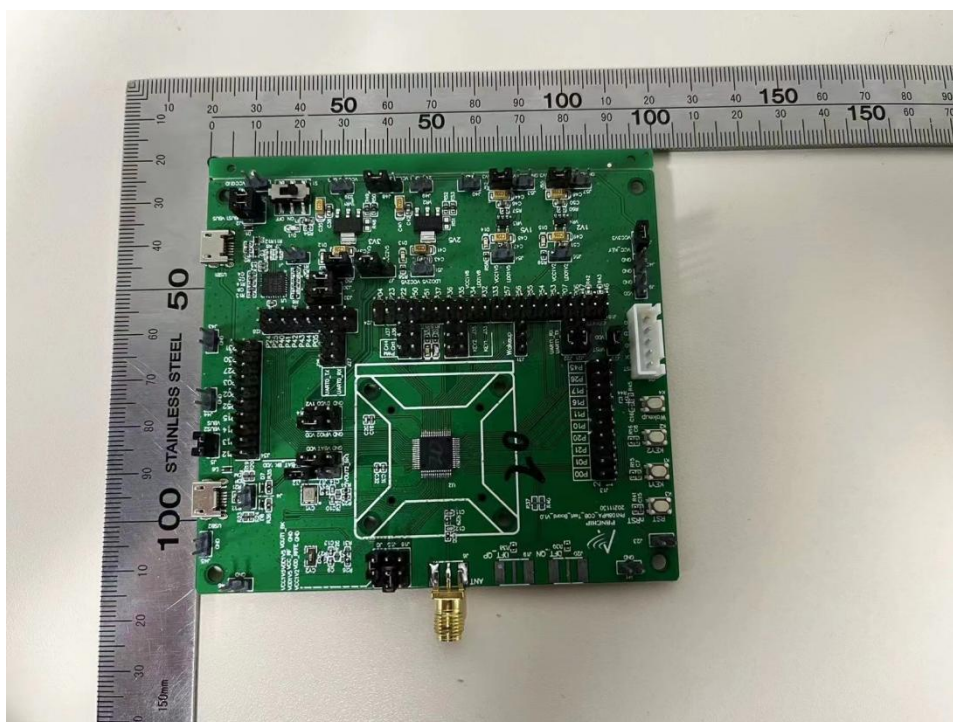


Photo1:The front view of EUT

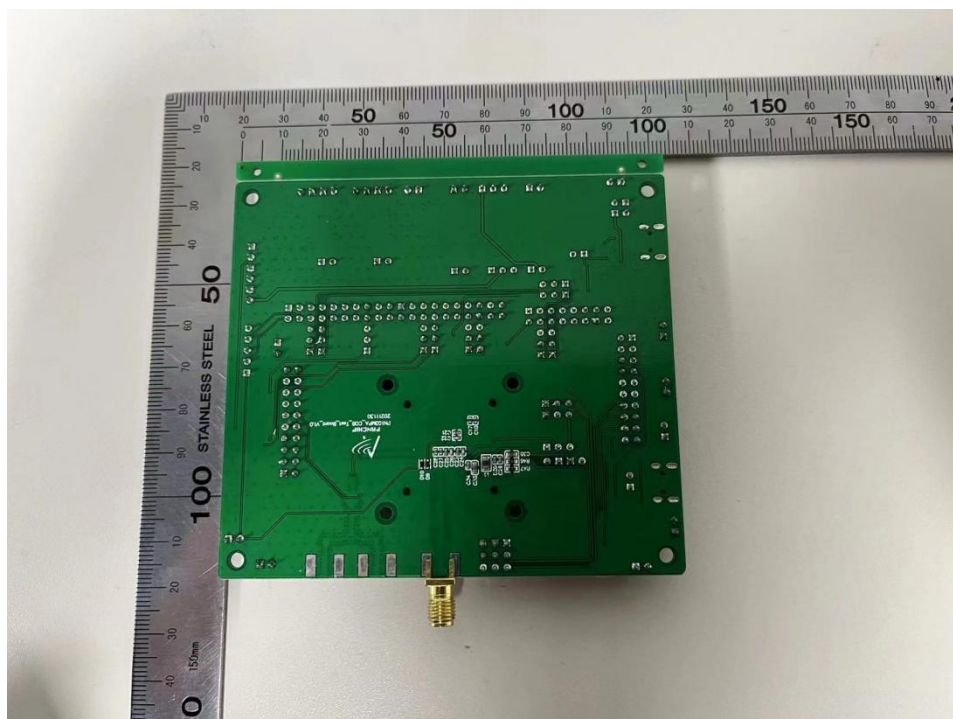


Photo2:The vertical view of EUT

----- This is the last page of the report-----